



Architects: Eden Architects (John-Barry Lowe)

Structural Engineer: DML Consulting

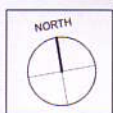
Sub-Contractor plumbing: Ecosave

Photography: Paul Tierney

Brief: To design four apartments and a meeting room for a charity that encourages independent living and a sense of community among tenants. The client had a house subdivided into four bedsits and a single storey meeting room to the rear previously on the same site. The original house was located in an architectural conservation area and it was a condition of planning that the new brick building respect the traditional architectural details of the area. Each tenant has their own independent apartment separated and connected by the central access hall and staircase, thereby carefully balancing privacy with a sense of connection. The new meeting room is the home of the charity. The ceremonial entrance through the gravel passage and low entrance hall into a tall handsome room with exposed oak beams creates an important sense of transition into a special place. The sliding door opens for special occasions.



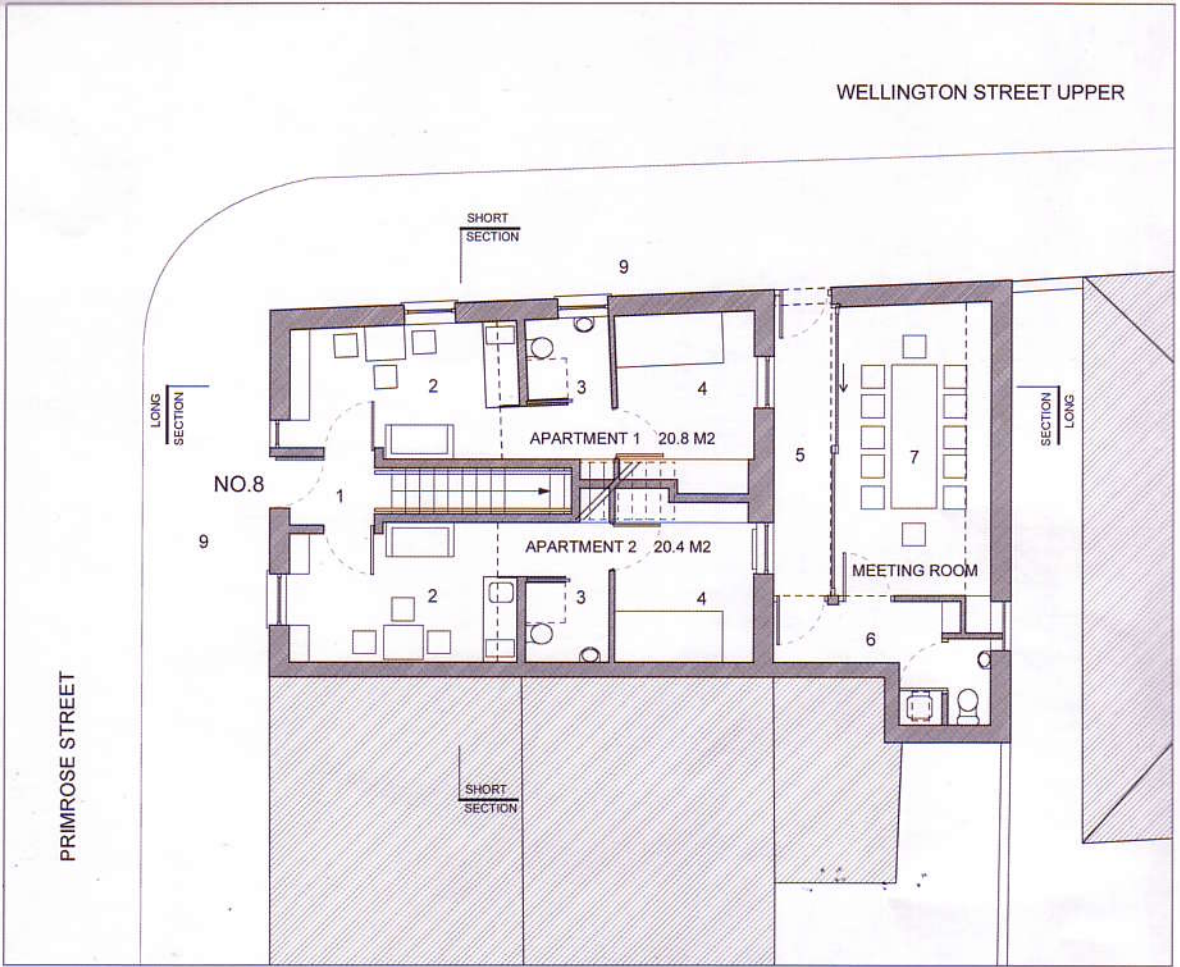
EDEN architects



SVP
Transitional
Housing
+
Meeting
Room

- KEY
- 1 ENTRANCE HALL
 - 2 LIVING
 - 3 BATHROOM
 - 4 BEDROOM
 - 5 OPEN AIR PASSAGE
 - 6 MEETING ENTRANCE
 - 7 MEETING ROOM
 - 8 GREEN ROOF
 - 9 FOOT PATH
 - 10 HEAT RECOVERY

SCALE 1:100
GROUND FLOOR PLAN



PRIMROSE STREET ELEVATION



WELLINGTON STREET ELEVATION



SHORT SECTION



LONG SECTION

EDEN architects

SVP
Transitional
Housing
+
Meeting
Room

- KEY
- 1 ENTRANCE HALL
 - 2 LIVING
 - 3 BATHROOM
 - 4 BEDROOM
 - 5 OPEN AIR PASSAGE
 - 6 MEETING ENTRANCE
 - 7 MEETING ROOM
 - 8 GREEN ROOF
 - 9 FOOT PATH
 - 10 HEAT RECOVERY

SCALE 1:100