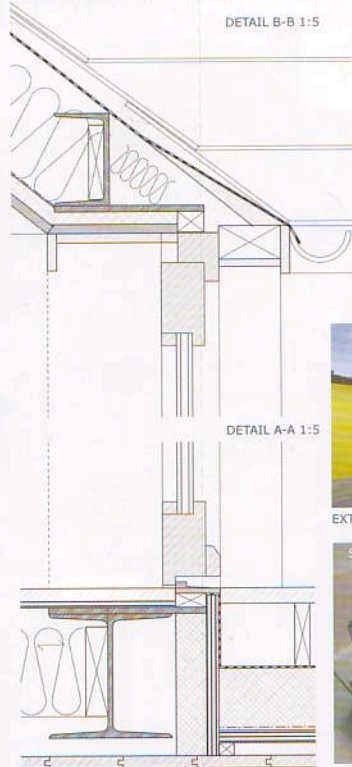
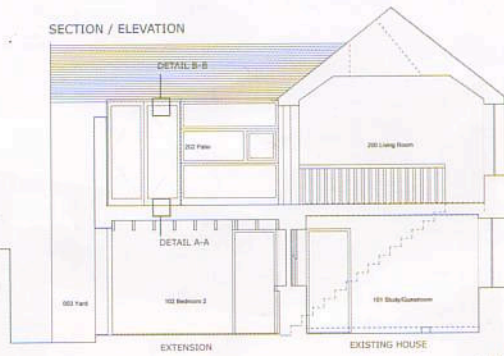




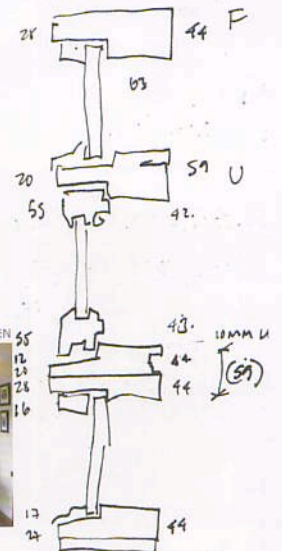
A WINDOW TO PRACTICE



SECTION / ELEVATION



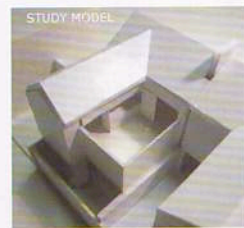
SKETCH SECTION



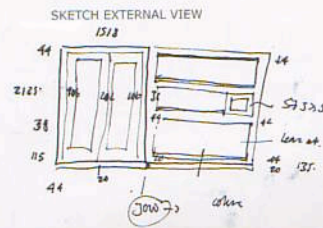
EXTERNAL VIEW TERRACE



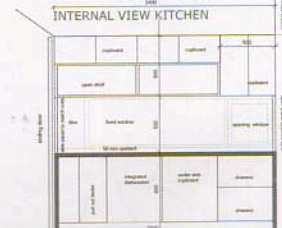
INTERNAL VIEW KITCHEN



STUDY MODEL



SKETCH EXTERNAL VIEW



INTERNAL VIEW KITCHEN

SCREEN

WINDOW

DOOR

FURNITURE



Brief: To convert a listed two storey, one up one down cottage with a single storey extension and yard to the rear into a new prototype for dense urban homes with living functions on the upper floor and sleeping functions on the level of the laneway. The first floor living and kitchen-dining spaces are arranged around a bright patio which is enclosed by a glazed screen and a yellow painted wall to make a private outdoor room. The kitchen units are integrated into a window and door screen providing views, light, ventilation and access to the patio on the inside and on the outside, a glass composition with a green panel which increases the illusion of spaciousness and foliage.

Architects: EDEN architects (John Barry Lowe)
Structural Engineer: Robert Barry Consulting Engineers
Contractor: CL Construction Ltd
Windows: Danhus
Kitchen: Mobalpa Kitchens
Photography: Paul Tierney